

# IMPORTANT

Visit: [www.torchgrip.com](http://www.torchgrip.com)  
for complete instructional video.

Align reference points on TORCHGRIP® base assembly, with these points on the template.

- 1) Trim template to closely match perimeter of tablet
- 2) Remove center disk instructions from template
- 3) Clean surface of tablet/case
- 4) Center and secure template to back of tablet
- 5) Remove release paper from grip-base adhesive ring
- 6) Carefully line up grip-base with hole in template and stick to tablet
- 7) Remove template and gently apply pressure around Grip-Base with palm of hand for 30 seconds
- 8) Attach grip to base

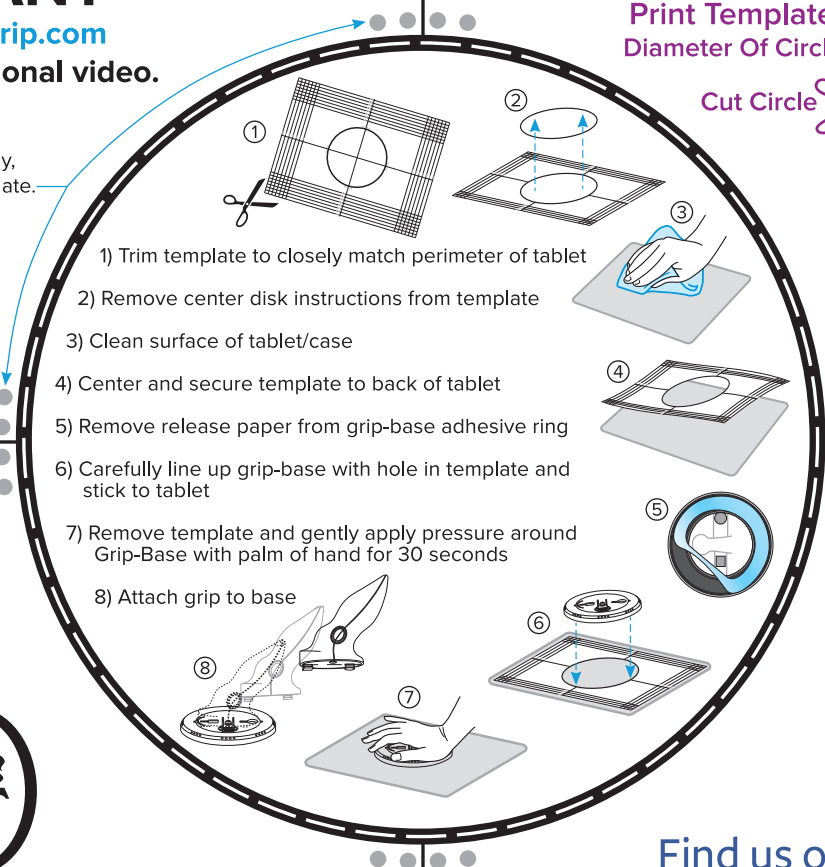


**TORCHGRIP®**

# IMPORTANT: Do Not Scale

Print Template At 100% Actual Size  
Diameter Of Circle = 4.134 inches (105 mm)

Cut Circle 



Mobility for Mobile Devices

### Warranty:

This product is warranted for 90 days from the time of purchase for most manufacturing or workmanship defects.

### Warranty does not include:

Any naturally occurring surface marks on the metal plated ring.

Visit: [www.torchgrip.com](http://www.torchgrip.com) for more info.

Contact TecDriven, LLC by emailing [your\\_voice@tecdriiven.com](mailto:your_voice@tecdriiven.com) for any questions or possible warranty claims.

Find us on 

Follow TORCHGRIP® on Facebook for our newest products and product designs.

PN 104100